



Department
for Education

Joint Intervention Team

AoC West Midlands Governor Induction Event

Solihull College & University Centre

21 January 2017

Karen Riley

Territorial Director



Education
Funding
Agency



Skills Funding
Agency

Content

Update on the Joint Intervention Team in the West Midlands

Risk based intervention – Formal & Prevention

Area Reviews & Structural Change

Reflections & Challenges



Education
Funding
Agency



Skills Funding
Agency

A changing landscape

- **New Government & Ministers**
- **One Department**
- **One Agency?**

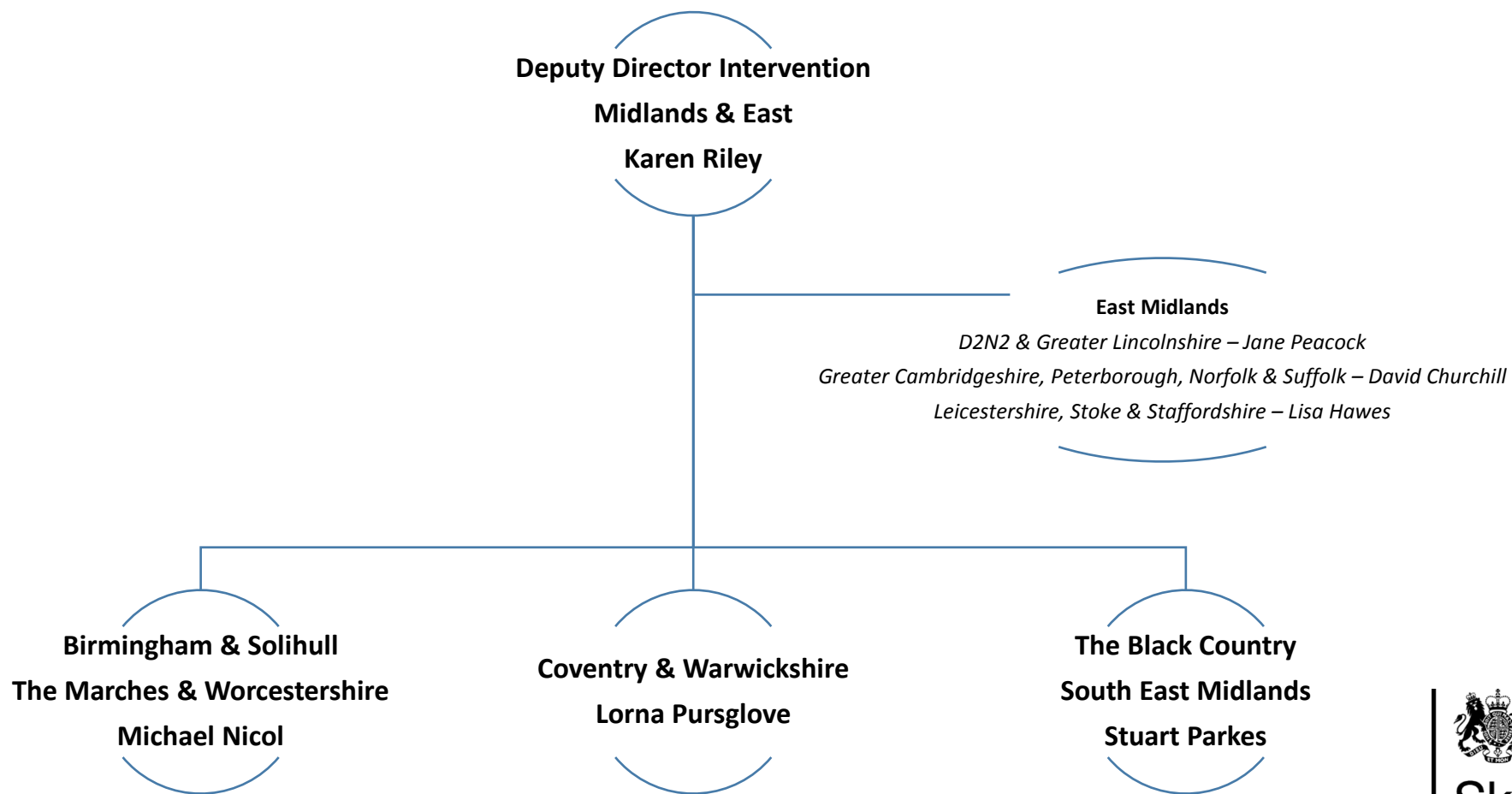


Role of the Intervention Team

- **Identify, manage and mitigate risk to provision and public funding;**
- **Intervene early to prevent and address failure minimising the impact on students and**
- **Support the Area Review process and oversee implementation**

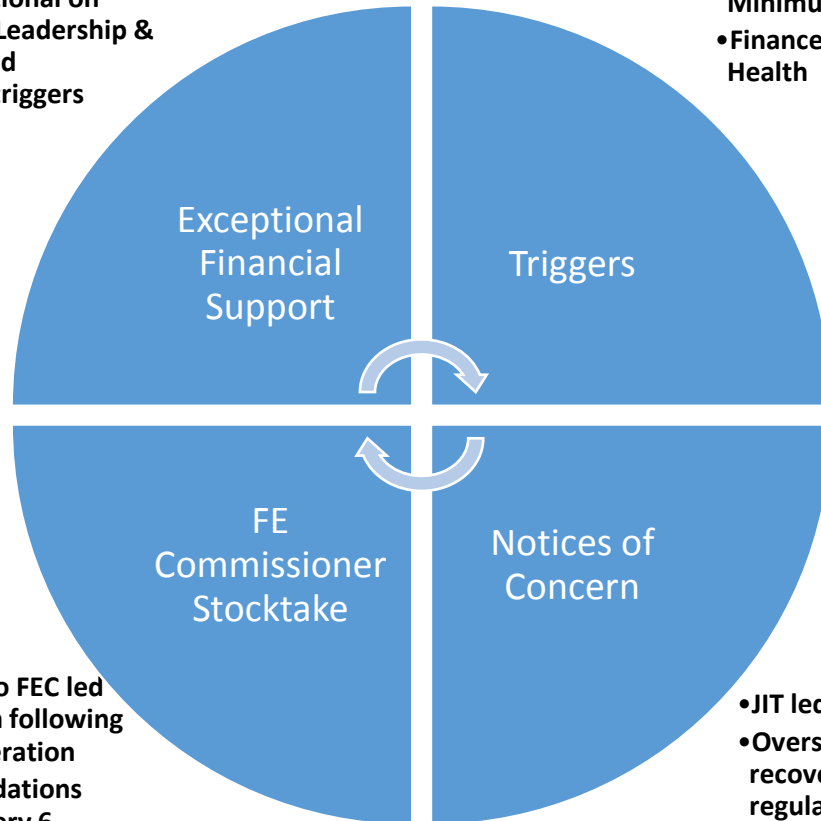


Joint Intervention Team in the WM



Risk based intervention - Formal

- Lender of last resort where necessary through Funding Committee
- Support conditional on strengthening Leadership & Governance and automatically triggers inadequate FH



- Quality – Ofsted Inadequate & Minimum Standards
- Finance – Control & Health

- Escalation to FEC led intervention following CRG consideration
- Recommendations revisited every 6 months through stocktakes

- JIT led intervention
- Oversight of college recovery plan through regular case conferences

- Approach to Intervention set out November 2015
https://www.gov.uk/government/uploads/system/uploads/attachment_data/file/475851/SFA-Approachtointervention-Nov2015.pdf
- Current position across the WM - 8 colleges in receipt of NOCs
<https://www.gov.uk/government/publications/sfa-current-notice-of-concern>
- No new Finance NOC's expected in the WM based on initial assessment of 2016-2018 financial plans but Ofsted & MS subject to inspection results and year end success rates
- 5 cases escalated to the FE Commissioner with 6 colleges currently in receipt of EFS
- Work underway to align NOC'S & NTIs

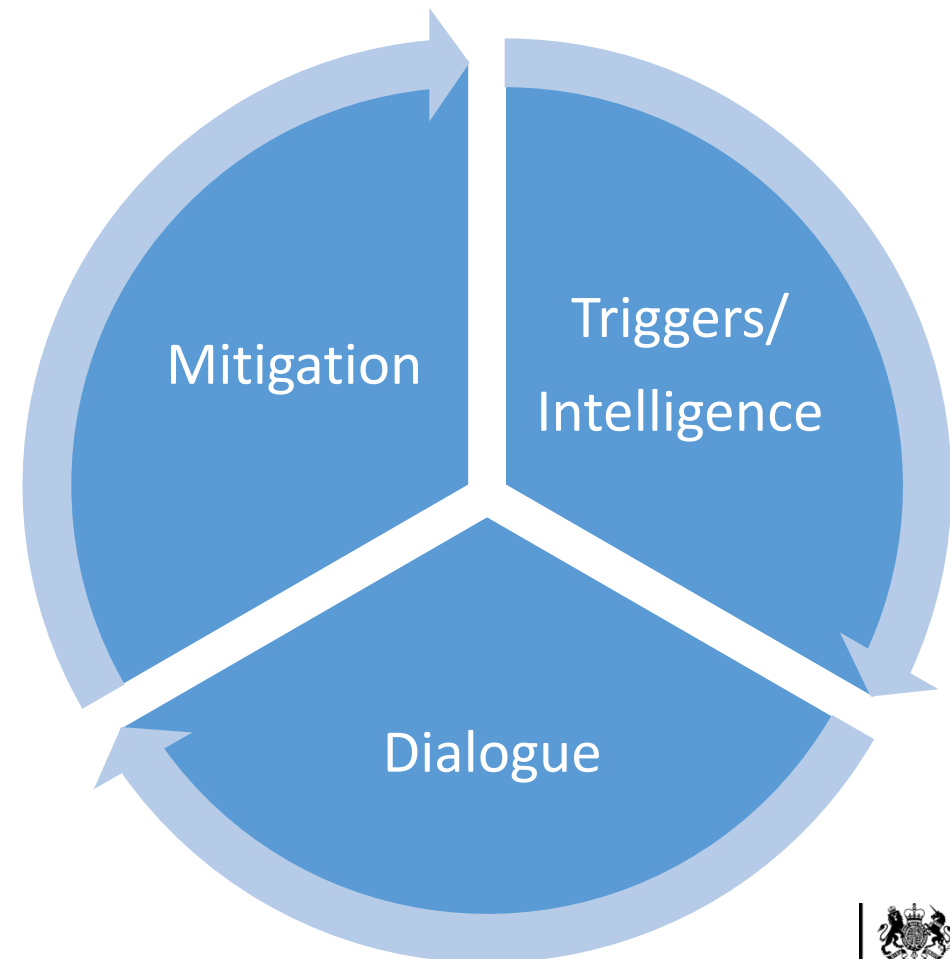


Risk based intervention - Prevention

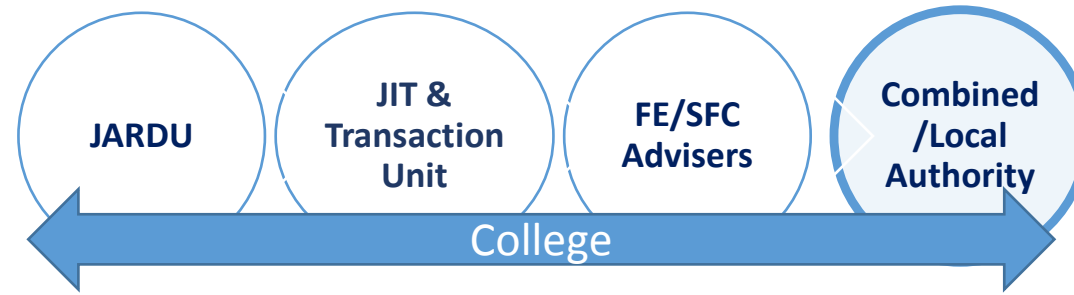
- NAO recommended a more proactive approach resulting in the risk based policy published in November 2015

https://www.gov.uk/government/uploads/system/uploads/attachment_data/file/475853/SFA_Early_Intervention_Strategy_Nov_2015.pdf

- A series of trend indicators (financial health, forecasting & quality) are used as triggers alongside institutionally generated intelligence/feedback to flag potential risks
- Dialogue with colleges to assess understanding of the risks and the action being taken/planned to remedy
- Where assurance secured light touch oversight maintained. Where assurance not secured, the policy sets out steps to escalate concerns
- A relatively small number of colleges have been identified as low risk in the WM. Dialogue is either planned or suggests mitigation is in place to address risks



Area Reviews



Progress

Next Phase

- Waves 1-3 completed, all WM reviews in first 3 waves - Birmingham & Solihull, Marches & Worcestershire, Coventry & Warwickshire, Black Country, and Stoke & Staffordshire.
- All WM reviews now in implementation phase.
Key outcomes:
 - Structural changes - 11
 - Academy conversions - 7
 - Apprenticeship Organisations – up to 3
 - Institute of Technology – 1
 - ATA – 1
 - One extension to secure sustainable solution

Transition Grant

Restructuring Facility

Guidance for LEPs and local authorities

Implementation Guidance & Due Diligence Framework

Academisation guidance (inc. TU assessment)

Implementation Guidance

Developed with wide range of stakeholders – currently consulting widely and aim to publish shortly

Takes account of lessons from previous changes and from other parts of UK; builds in views of Turnaround experts;

The essential building blocks:

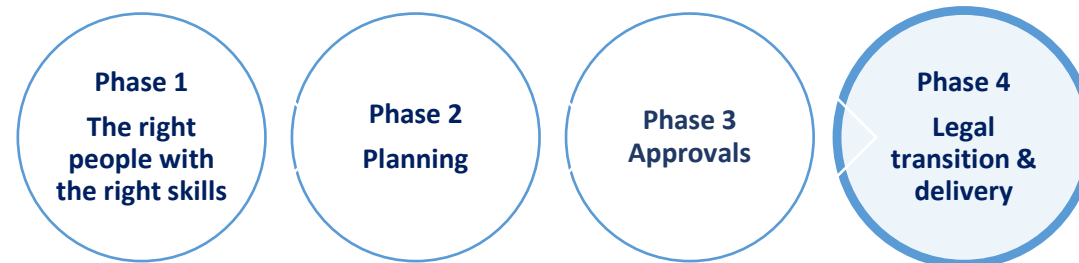
Having the right “change” expertise

Have a shared vision for the institution

Good planning and project management

Strong governance and leadership, including clear accountability

Excellent communications and stakeholder engagement – with learners; employers; staff; LEPs/local authorities; lenders etc



Reflections & Challenges





Department
for Education

Any Comments or Questions?



Education
Funding
Agency



Skills Funding
Agency¹¹