

The further Education system and college governance: An introduction for new Governors

Saturday 21 January 2017



Association of Colleges
West Midlands

The
Education
& Training
Foundation

Aims for the day

Our aims are that you leave today with:

- knowledge of the key areas which impact on colleges and your role as a college Governor including the legal framework in which governs colleges, funding, inspection and regulation
- an appreciation of the role your Clerk plays and the support he or she can offer
- an idea of how things are done at other colleges
- Increased confidence to ask questions of the Executive Team, and able to comment on and debate the effectiveness of your college, the opportunities open to it, and areas where improvement might be needed

Inspirational places to learn



There are **325** colleges in England as of September 2016



General further education



Sixth form colleges



Specialist designated



Land-based



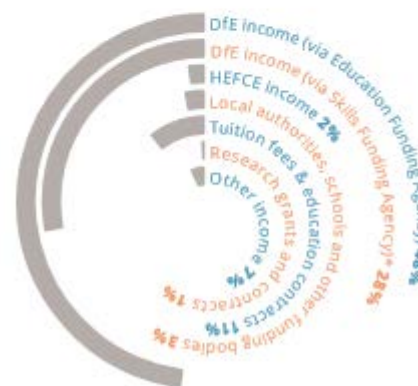
Art, design and performing arts

The total college income in England:

£7.4 billion

in 2014/15

College income analysis, 2014/15



* DfE income (via Skills Funding Agency) includes: 'European Union co-financed' and 'release of capital grants'

Students

- **20,000** 14 to 15-year-olds are enrolled in colleges: **3,000** full-time, **17,000** part-time.
- **744,000** 16 to 18-year-olds choose to study in colleges (compared with **433,000** in schools).¹
- An additional **75,000** 16 to 18-year-olds undertake an apprenticeship through colleges.
- **1.9 million** adults study or train in colleges.

Colleges educate and train



Apprenticeships

- Almost **every** general further education college offers apprenticeships.
- There are **306,000** people on apprenticeship provision in colleges.
- The average college trains **1,200** apprentices.
- Colleges train nearly **half** of all construction, engineering and manufacturing apprentices.

Number of apprenticeships in colleges by age and highest level, 2014/15

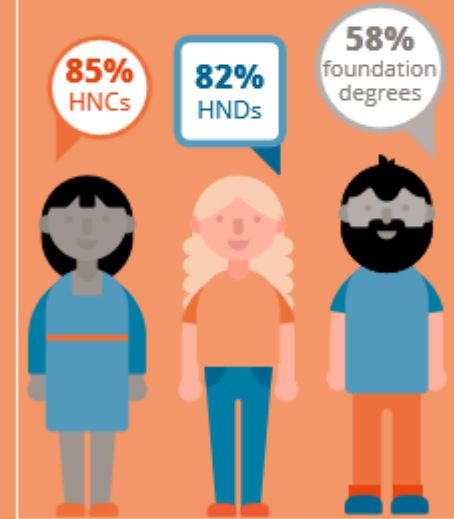


¹16 to 18-year-olds includes a small number of students aged under 16

Higher education

- **153,000** people study higher education in a college.²
- **241** colleges provide undergraduate and postgraduate level courses; **86%** teach foundation degrees.
- **One-third** of the English domiciled students aged under 19 who enter higher education through UCAS studied at a college.

Colleges deliver



Diversity

- **23%** of 16 to 18-year-olds and **30%** of adults in colleges are from an ethnic minority background².
- **106,000** college students are aged 60 and over.
- Colleges provide higher education for local people from non-traditional backgrounds – the average distance between home postcode and learning location for undergraduate students attending a college is **17 miles** compared to **52 miles** for those at a university.
- **17%** of students on further education and skills provision have a learning difficulty and/or disability.
- **17%** of 16 to 18-year-olds in colleges were eligible for, and claiming, free school meals at age 15, compared with **9%** in maintained school and academy sixth forms in 2014/15.

Employers

- **35%** of large employers who train their staff do so through a college, compared with **32%** who do so through a university.
- The average FE college works with around **600** businesses to provide training for their staff.
- Employers view 17 to 18-year-old college leavers as better prepared for work than school leavers of the same age (**71%** compared to **60%**).

Staff

- Colleges employ **127,000** full-time equivalent people, **65,000** of whom are teaching staff.
- **42%** of college principals are female, this compares **39%** of head teachers in maintained secondary schools and academies and **19%** of vice-chancellors in universities.
- There are **6,000** governors in colleges in England; **40%** are female and **14%** are from an ethnic minority background.

It may be a college, Jim ...

- Hills Road Sixth Form College
- Fircroft College of Adult Education
- University College Birmingham
- Elwes Hall Sports College
- Telford College of Arts and Technology
- Clare College, Cambridge
- Queen Alexandra College

Question

- As a Governor new to a college, what do you think are the key challenges facing:
 - You
 - Your college
 - Your students

- How do you find out more?

Some current things to keep Principals awake at night



Questions and discussion

- We know what a Governing Body is, but what makes it effective?
- Identify 5 attributes/skills/behaviours which could describe an effective Governing Body

Summing up
