



ASSOCIATION
OF COLLEGES

College IT and Digital Technology Survey 2018

David Corke
Director of Education and Skills Policy
Association of Colleges



Response rate – by region

75 responses from 72 Colleges

Region	Number of responses	Number of colleges in region	Percent within region
Eastern region	5	26	19%
East Midlands	3	17	18%
Greater London	4	39	10%
North East	7	15	47%
North West	12	44	27%
South East	11	44	25%
South West	9	24	38%
West Midlands	8	29	28%
Yorkshire and the Humber	13	28	46%
Total Colleges England	72	266	27%
Additional responses (i.e. other partner in merged college)	3		
Total responses	75		

Responses by type of college

Type	Number of responses	Number of colleges in England	Percent within type
General further education college	62	179	35%
Sixth form college	4	61	7%
Specialist college	6	26	23%
Total Colleges England	72	266	27%
Additional responses (other partner in merged college)	3		
Total responses	75		

Digital devices available in colleges

Average of 2,636 digital devices available for lecturer/student use

Q4. How many digital devices are available for lecturer / student use (including those provided on loan) of the following type?	Average per college
Desktop (for lecturers)	476
Desktop (for students)	1,383
Tablet (for lecturers)	96
Tablet (for students)	138
Laptop (for lecturers)	183
Laptop (for students)	367
Desktop	1,852
Tablet	234
Laptop	549
Total for lecturers	749
Total for students	1,887
Total	2,636

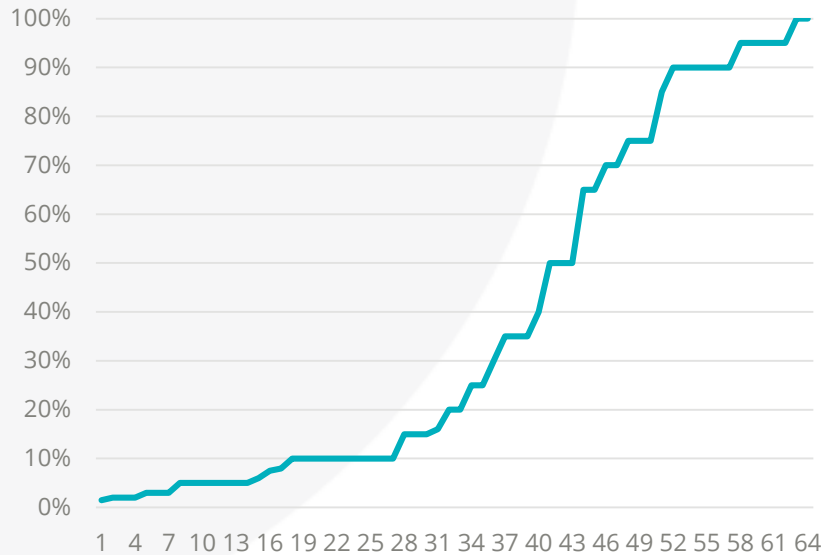
- 36% of digital devices in use are more than 5 years old (an average of 937 per college)
- 33% of devices expected to become unusable by 2020 (an average of 845 per college) - (i.e. due to age of the equipment or because the equipment is running software that will no longer be supported, such as Windows 7 or legacy versions of Android or iOS)

- 91% of colleges allow students to bring their own device (BYOD) for use on the college network
- 85% of colleges allow staff to bring their own device (BYOD) for use on the college network

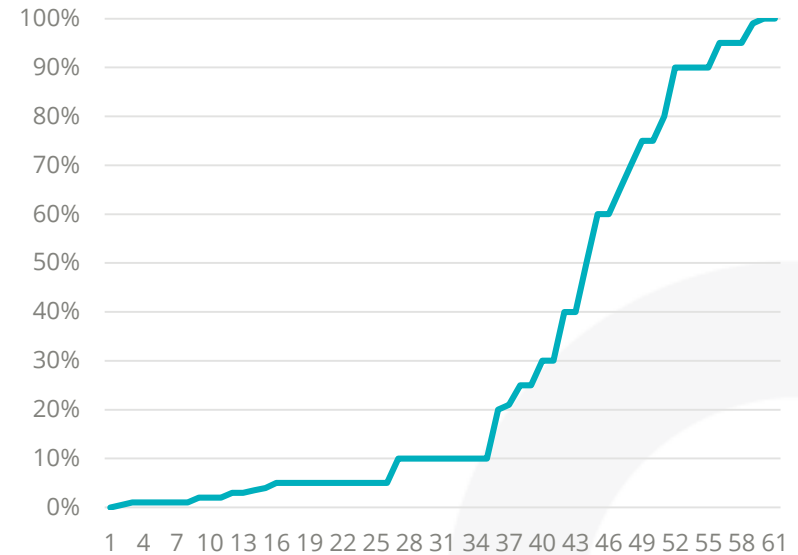
Estimate of percentage of students / staff that bring their own device for use on the college network

Q8. If 'Yes' to Q7, what percentage of students / staff do you estimate bring their own device for use on the college network?	Percentage of students	Percentage of staff
MODE	10%	5%
MEDIAN	20%	10%
MIN	2%	0%
MAX	100%	100%

Range in percentage of students

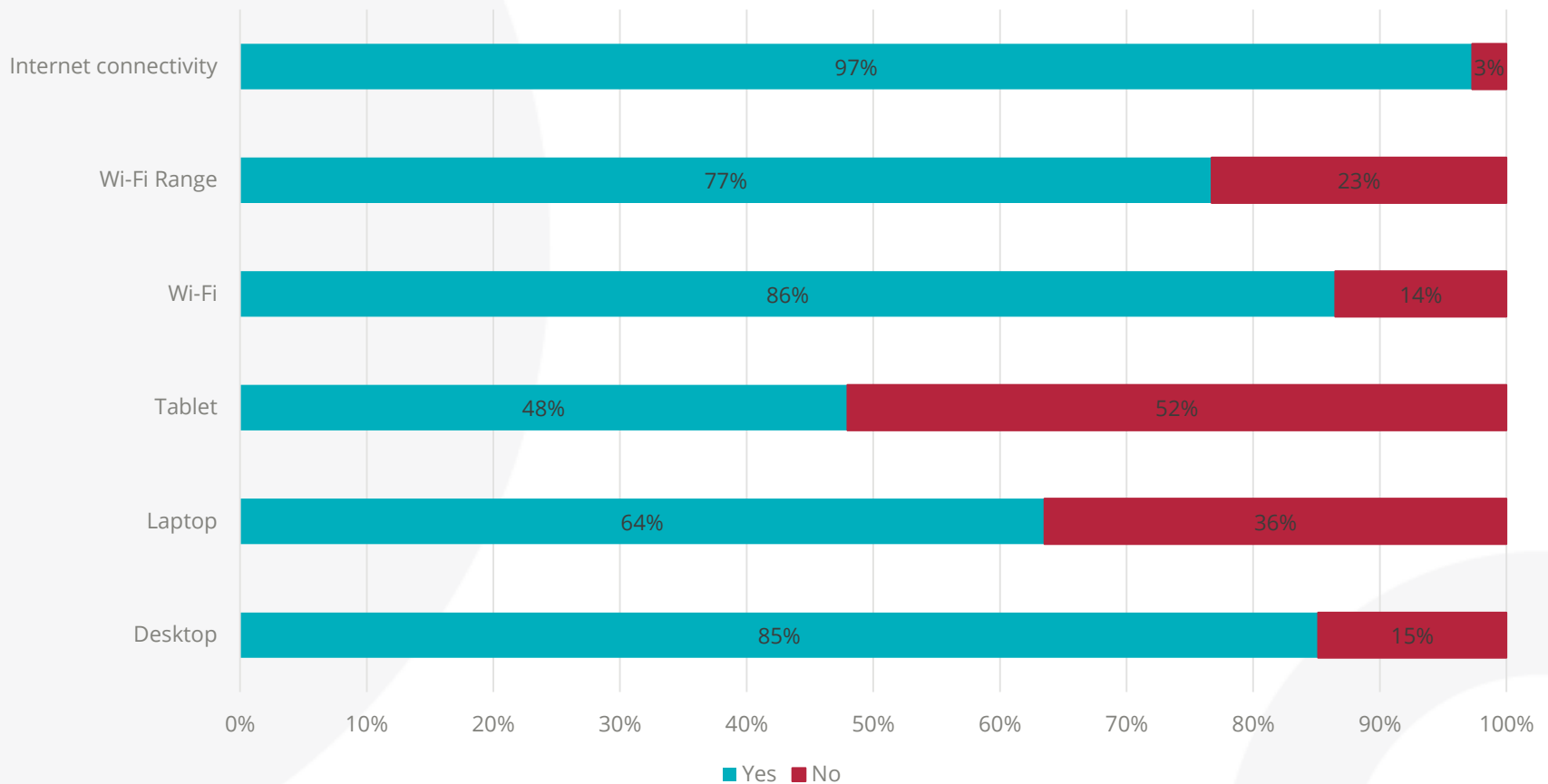


Range in percentage of staff



IT and digital technology facilities

Based on current demand, is your college well-resourced with the following facilities?



College IT budget

- Average IT budget for 2018/19 is £937,087
 - 27% Support
 - 18% Computers
 - 10% Peripherals /networking
 - 26% System software
 - 12% Other
- Percentage of the college's budget spent on IT
 - Mode: 4%
 - Median: 4%

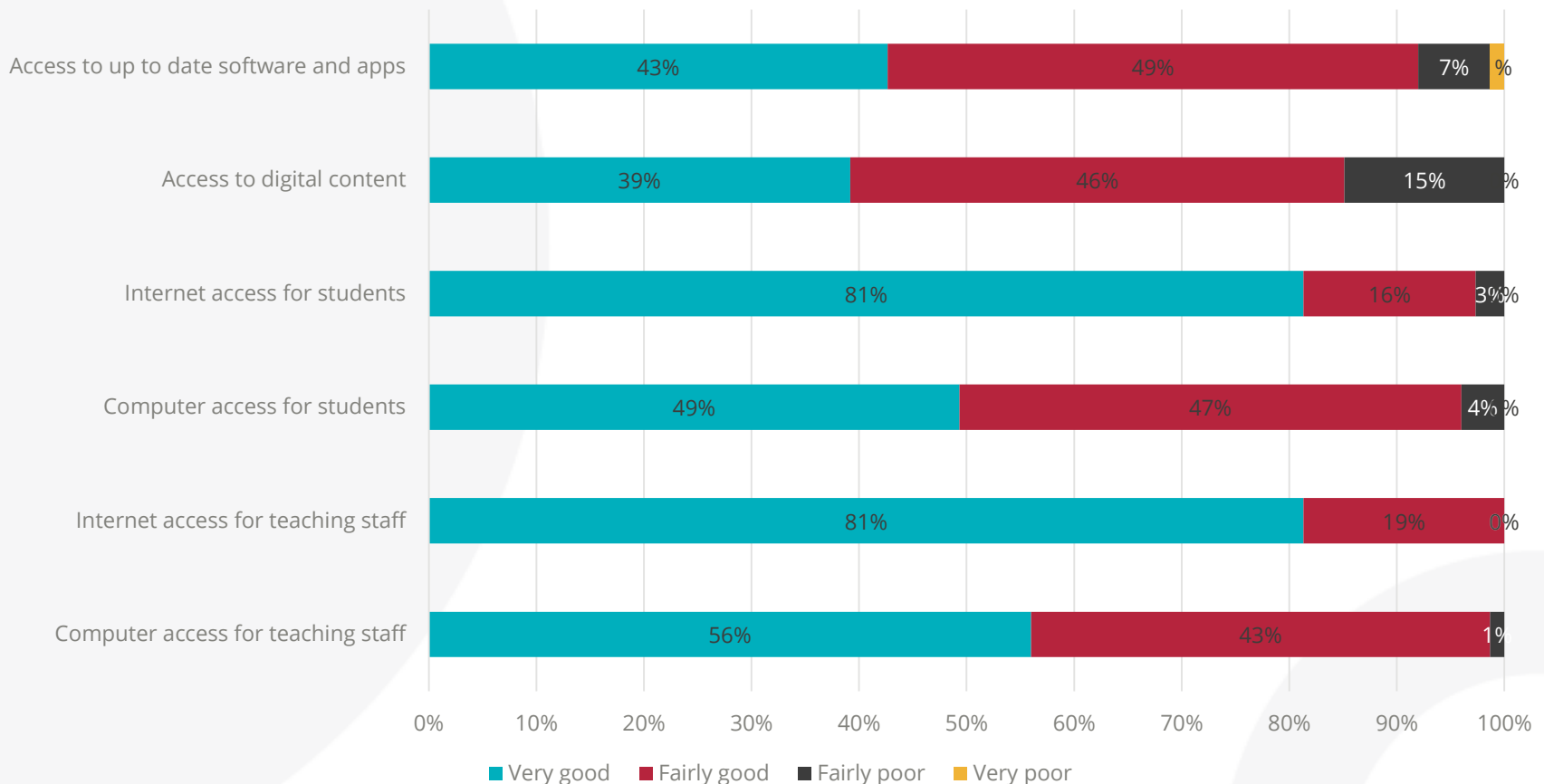
IT budgets and investments

Q12. To what extent is IT / digital technology a priority when budgeting?	Number of responses	Percent
High	35	48%
Medium	31	42%
Low	2	3%
No view	5	7%
Total	73	100%

Q13. Compared to expectations in September 2017, have you now had to downgrade your planned IT investments for 2018/19?	Number of responses	Percent
Yes	33	44%
No	42	56%
Total	75	100%

Access to digital technology and facilities

In your view, and based on current demand, how good is the level of access your college provides for each of the following:

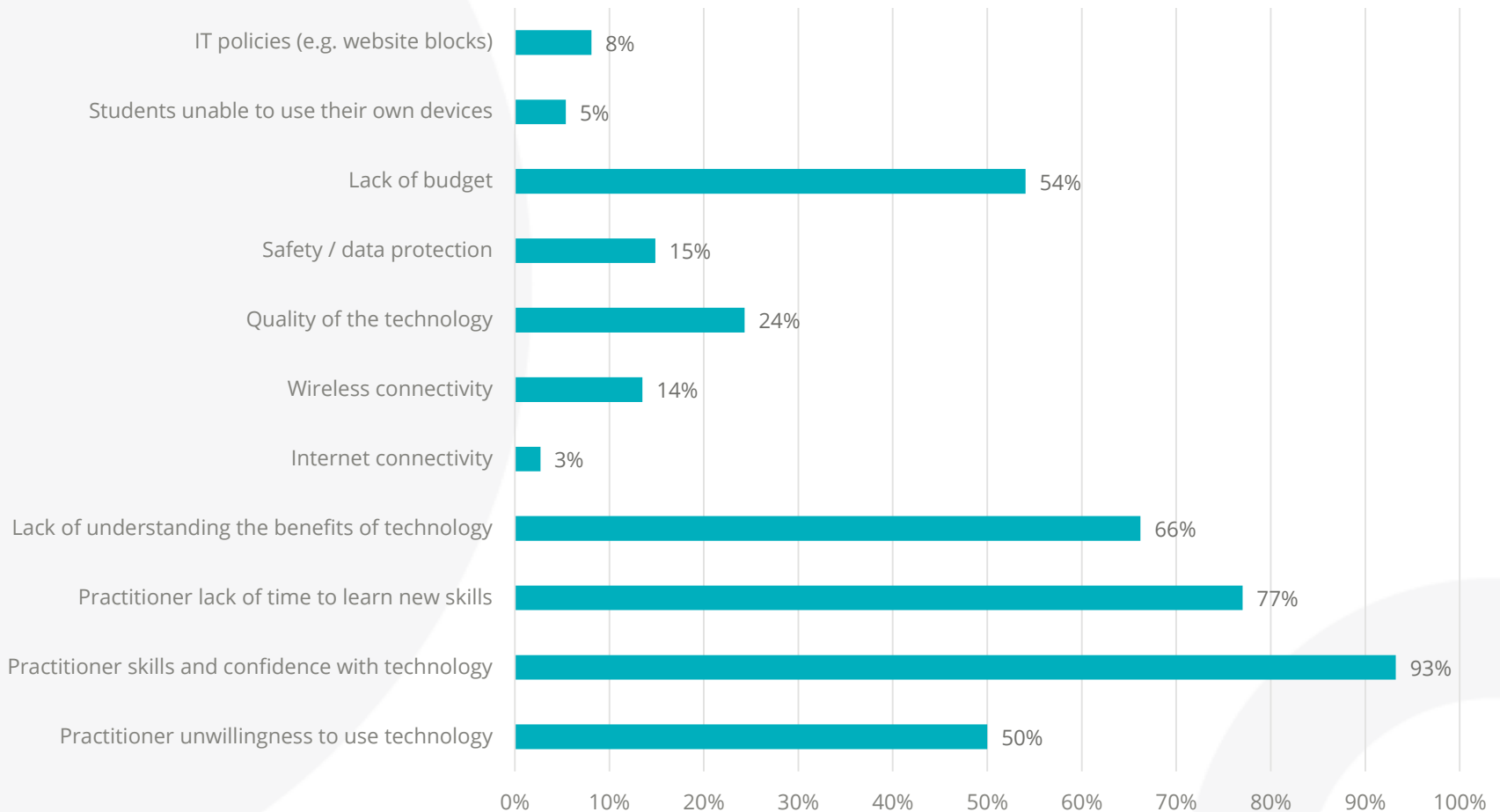


Education technology, digital content delivery and training

- Proportion of teaching staff in colleges that are making effective use of education technology in the classroom
 - Mode: 50%
 - Median: 50%
 - Range: 5% - 97%
- Proportion of teaching staff that currently require and could make effective use of training in the use of delivering digital content
 - Mode: 80%
 - Median: 70%
 - Range: 5% - 100%

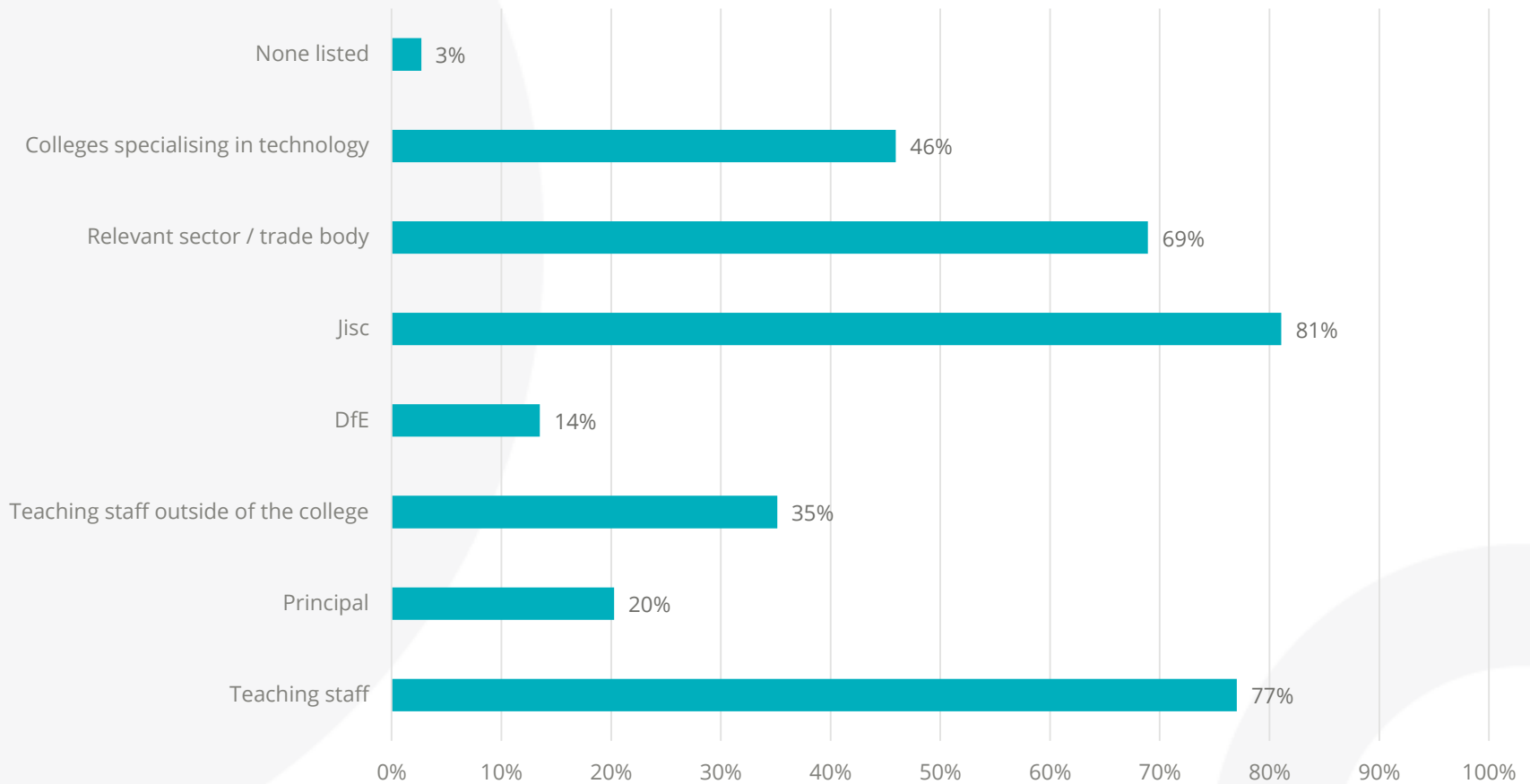
Main barriers in colleges making more use of education technology

Main barriers in your college making more use of education technology



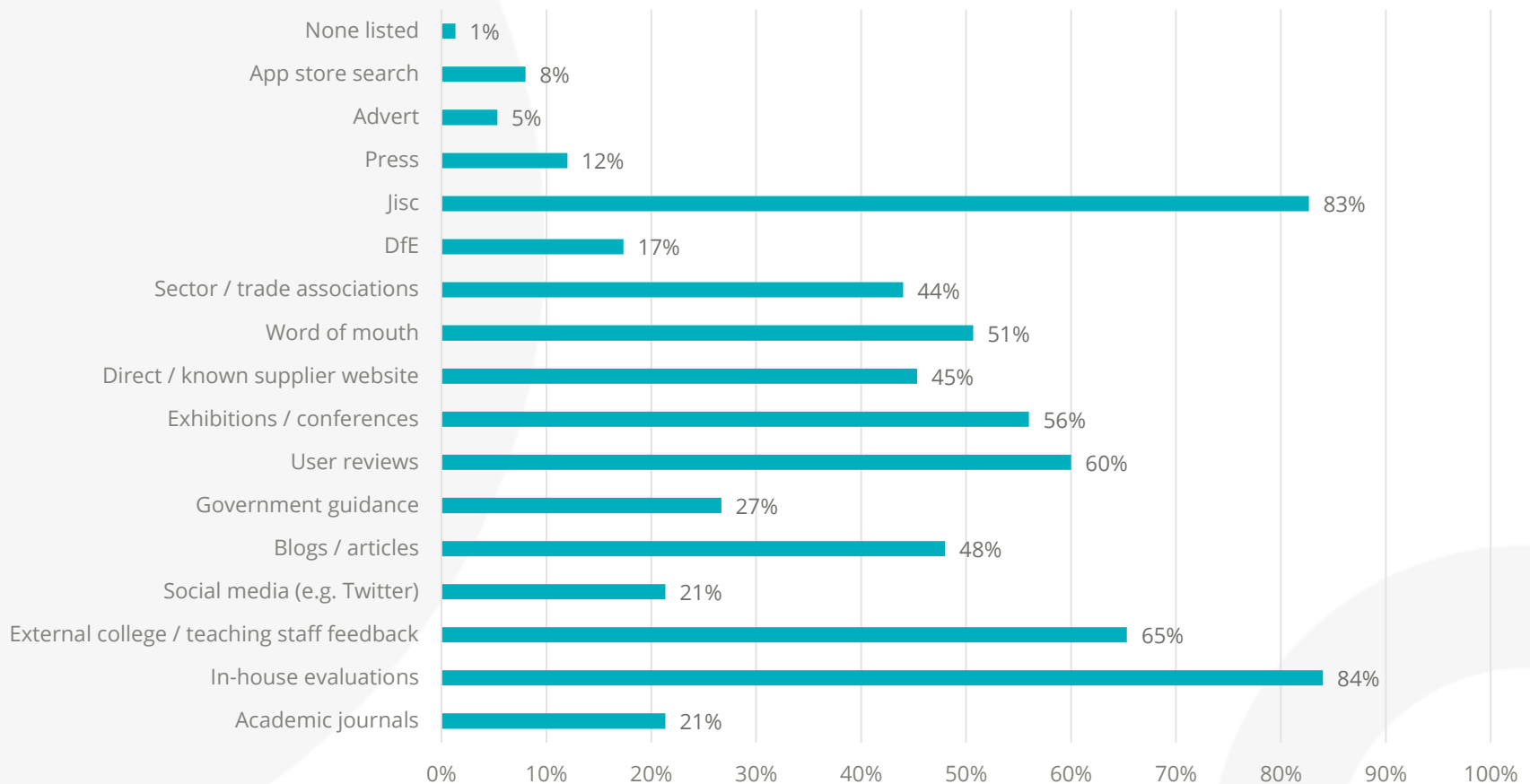
Recommendations on new technology

Whose recommendations are you most likely to value when it comes to choosing and using technology at the college?



Advice on assessing efficacy of technology

What or who are you most likely to seek advice from when assessing efficacy of technology?

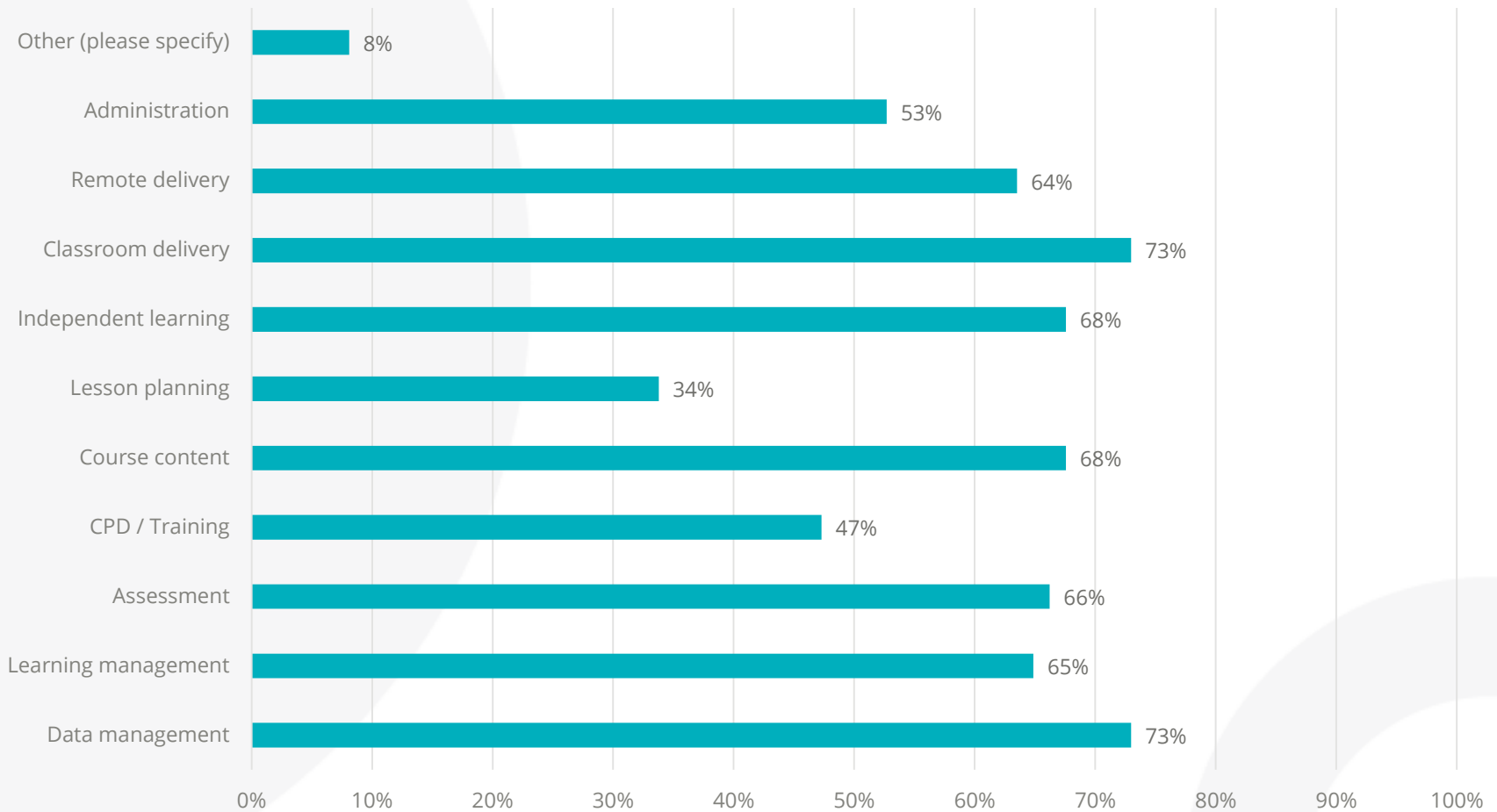


Evidence of impact of technology

Q20. Do you think there is enough evidence and information on the impact of technology in education?	Number of responses	Percent
Yes	5	7%
To some extent	43	57%
No	23	31%
Don't know	4	5%
Total	75	100%

Demand for technology in colleges

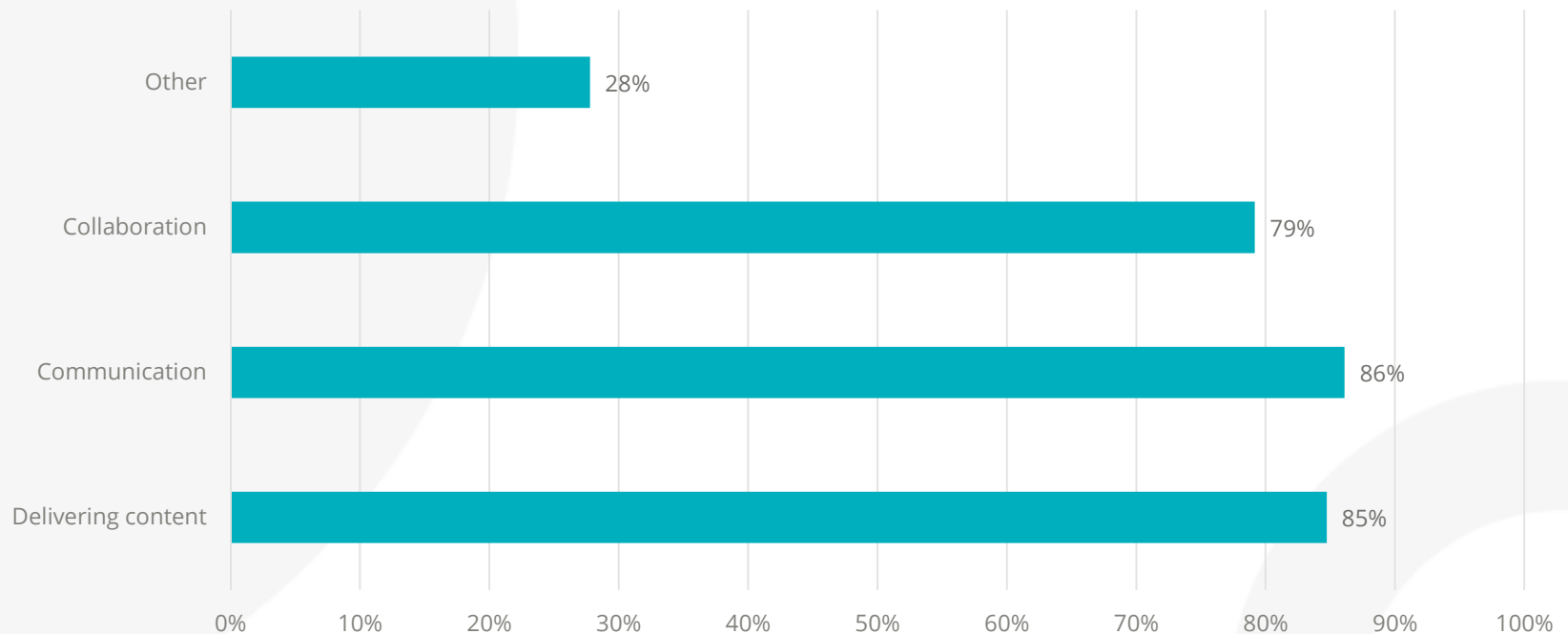
Where do you think there is most demand for technology in FE?



Cloud based services

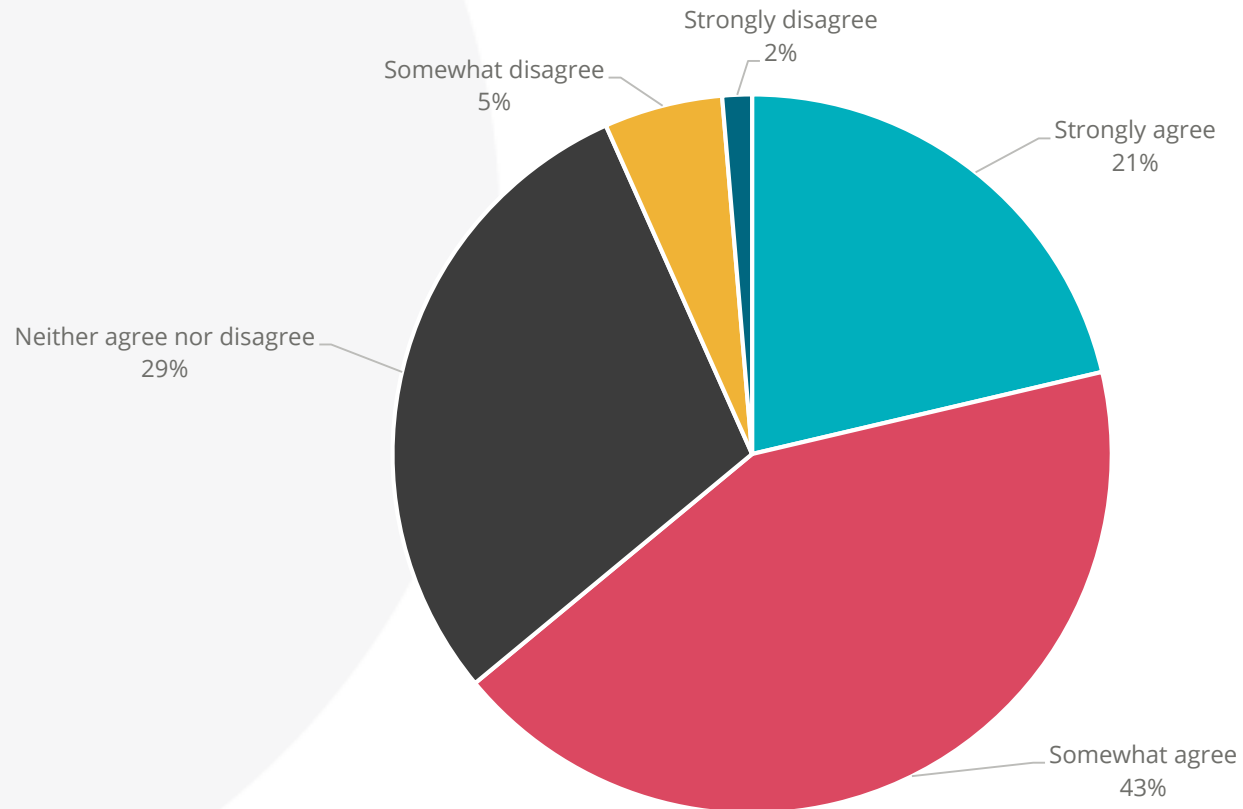
- 96% of colleges make use of cloud based services

If your college makes use of Cloud based services, what do you use it for?



Advice and guidance

To what extent do you agree / disagree that colleges require Government / DfE to offer impartial advice and guidance on the implementation and use of education technology?



Any questions?

david.corke@aoc.co.uk