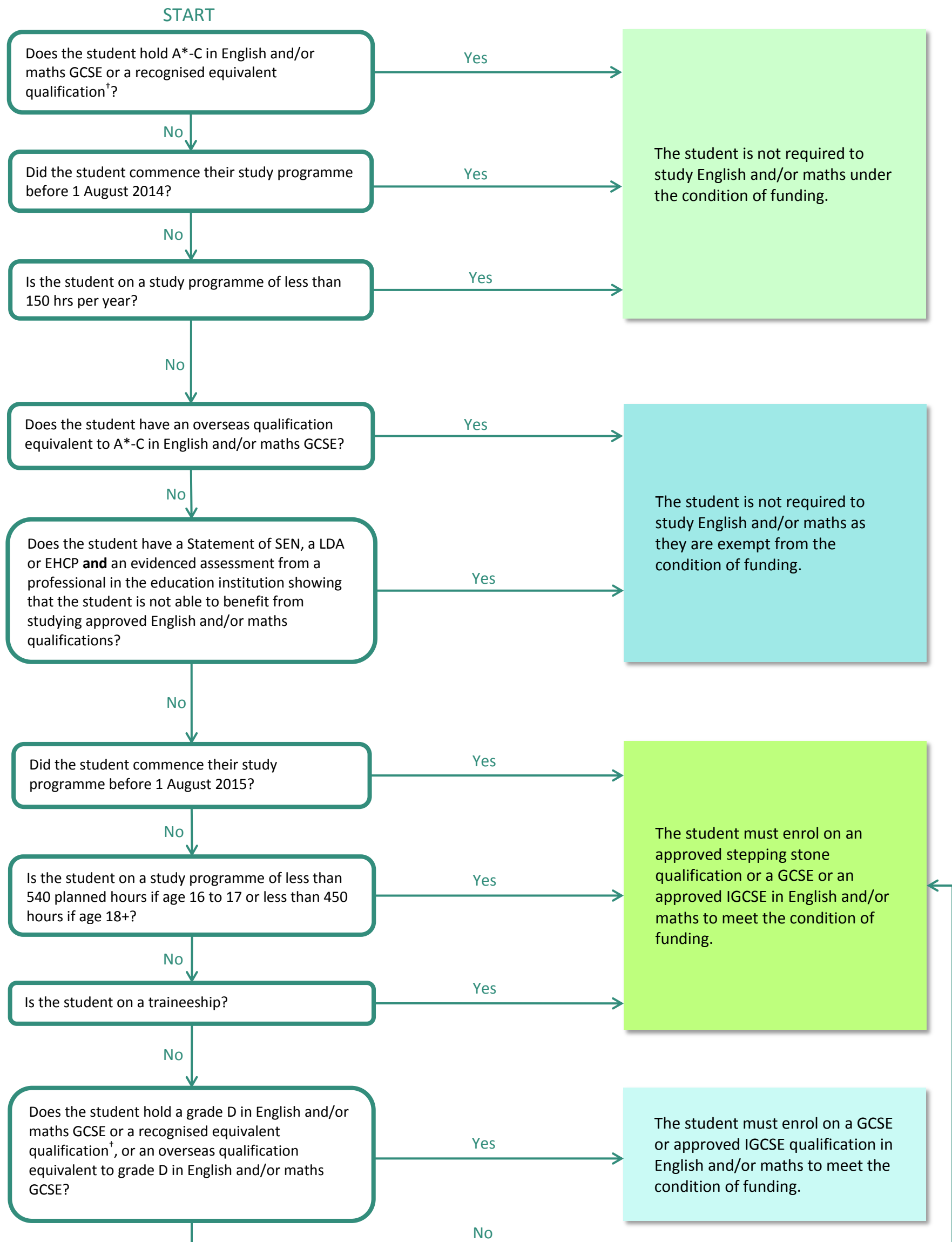


16 to 19 English and Maths Condition of Funding: 2014/15 and 2015/16

This flowchart is designed to help post-16 institutions in determining what English and maths courses a student should enrol on as part of their study programme to meet the English and maths condition of funding. It should be used in conjunction with the full guidance available here: <https://www.gov.uk/16-to-19-funding-maths-and-english-condition-of-funding>.

The condition of funding applies to 16 to 18 year olds on study programmes and 19 to 25 year olds who have a Learning Difficulty Assessment or Education Health and Care Plan who have not yet attained A*-C in English and/or maths GCSE or an equivalent qualification. Those who start a new study programme of 150 hours or more from 1 August 2014 must study approved English and/or maths qualifications as part of their study programme, unless they are exempt. From 1 August 2015, the condition of funding will be amended to require all students with D grades in English and/or maths to take GCSEs rather than approved 'stepping stone' qualifications in these subjects. Providers who do not meet the condition of funding will lose funding in future years. The condition of funding does not apply to students on apprenticeships.



† For guidance on qualifications which are treated as equivalent to GCSE A*-C for the purposes of recognising prior attainment, see the 16-19 maths and English condition of funding factsheet here: <https://www.gov.uk/16-to-19-funding-maths-and-english-condition-of-funding>.